



Synology

SMART
STREAMLINED
SOLID

2019

Win a DS718+!

- Share what you see today using [#Synology2019NYC](https://twitter.com/Synology2019NYC)
- Once posted, send the link to synology2019NYC@synology.com
- Entries close October 19, 2018
- The winner will be notified via e-mail



Synology 2019

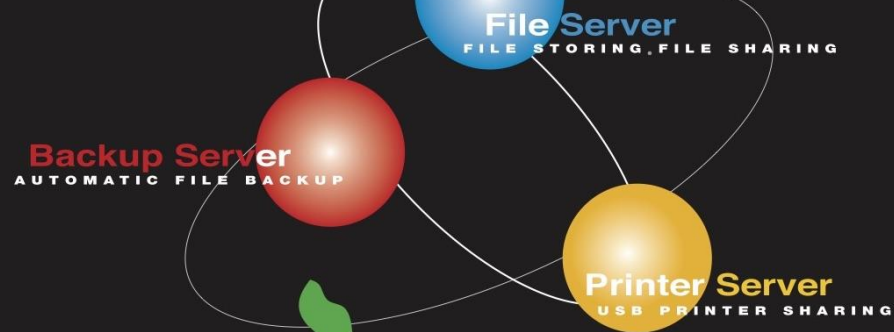


Alex Wang
CEO, Synology America





Synology® **3in1** Server SOHO & HOME






DS-101 Disk Station NAS Barebone System

DS-101 DiskStation HIGHLIGHTS

- + 3-in-1 Server: File Server, Backup Server, and Printer Server
- + Low Cost: Standalone Linux based embedded system, no console or license fee are required
- + Easy to install
- + Easy to use
- + File sharing between Windows clients and Macintosh clients
- + Automatic file backup for Windows clients
- + Share USB printer throughout network
- + Powerful server management software
- + Share level security
- + Share external USB disks through network
- + Three USB 2.0 Ports Supported
- + One push-button USB flash backup
- + Fanless design without any noise
- + HDD Sleep Mode: For power saving and noise reduction
- + Optional HDD: 120GB/160GB/250GB capacities
- + Portable

**An Innovative Network Attached Storage
for Small Office and Home Office.**

 Home System Network Tools Device Help Logout

Summary

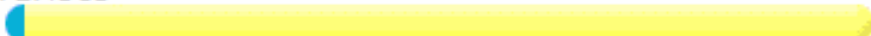
Status

Log

About

Summary

Basic Information

Server Name	DiskStation
Model Name	DS-106e
IP address	192.168.0.7
Unused size	72.45GB
Disk usage	

Site Map

Home Information and logs

- [Status](#), [Log](#), [About](#)

System System settings

- [User](#), [Group](#), [Shared Folder](#), [Time](#), [Hardware Manager](#), [Backup](#)

Network Network settings

- [LAN](#), [Win/Mac OS](#), [FTP Service](#), [Web Service](#), [Mail](#), [Download Service](#), [Multimedia Service](#)

Tools Management tools

- [Shutdown](#), [Restore Defaults](#), [Update](#), [Local Backup](#), [Network Backup](#)

Device Attached devices

- [USB Disk](#), [USB Printer](#), [SATA Disk](#), [USBCopy](#), [UPS](#)

Help Manipulation tips

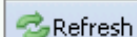
- [Menu](#)

Disk Station

Home >> Information >> Status

Home Restart

- Information
 - Status
 - Log
 - About
- System
 - Network
 - Language
 - PPPoE
 - Time
 - Notification
 - Power
 - Restore Defaults
 - Firmware Update
 - Package Management
- Privileges
 - User
 - Group
 - Shared Folder
- Storage
 - HDD Management
 - Volume
 - SMART
- Network Services
 - Win/Mac OS
 - FTP
 - Web Services
 - Multimedia



Refresh

Basic information

Server name	dsWiki
Serial number	
Model name	DS508
Total Physical Memory	512 MB
Firmware version	DSM 2.0-0728
System time	Tue Dec 30 22:02:06 2008
Operating time	8:0:44
System temperature	41 °C / 106 °F

Network

eth0 MAC address	
eth0 IP address	
eth0 Subnet mask	
eth1 MAC address	
eth1 IP address	
eth1 Subnet mask	
DNS	
Default gateway	
Workgroup	WORKGROUP
AppleTalk Zone	<Not Configured>
WINS server	<Not Configured>

Time

Hard Disk(s)

USB device

eSATA device



File Browser



Control Panel



DSM Help



Quick Start

Quick Start

Welcome to DiskStation Manager 3.0!

These quick tours will guide you through basic setup and help you get familiar with the New NAS Experience.

Control Panel



File Sharing and Privileges



Win/Mac/NFS



FTP



User



Group



Shared Folder



Application
Privileges

Network Services



Web Services



DDNS



Router
Configuration



Firewall



Auto Block



Terminal



SNMP

System



Network



Language



Time



Notification



Power



External
Devices



Restore
Defaults



DSM Update

Application Settings



Media Server



iTunes



Audio Station



Photo Station



Download
Station

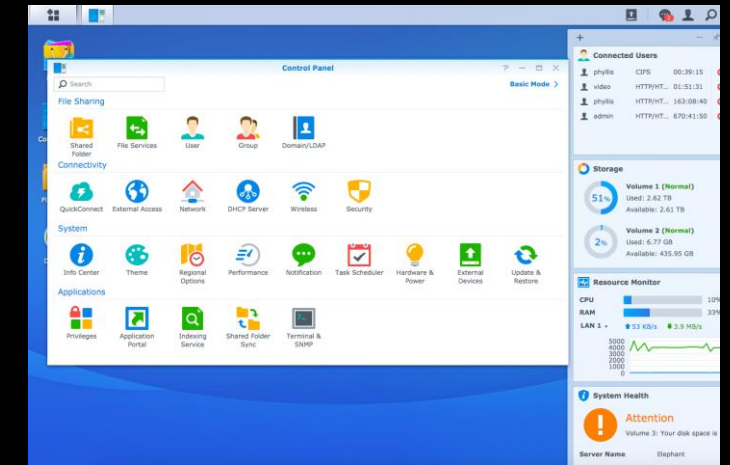
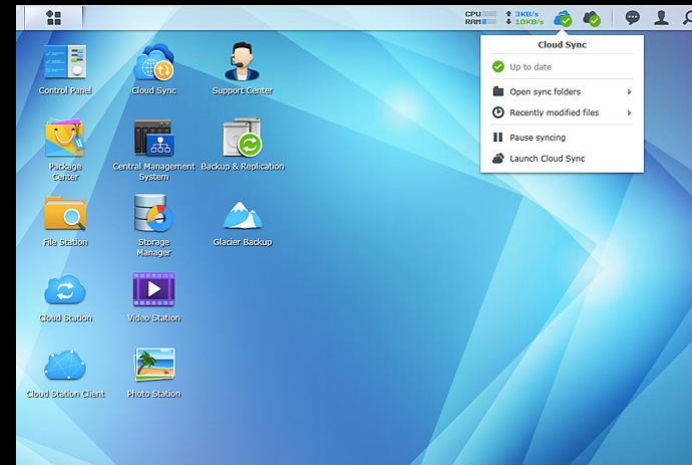
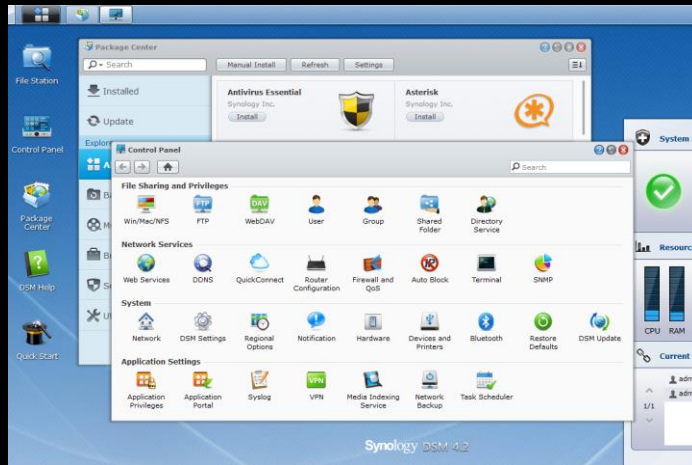
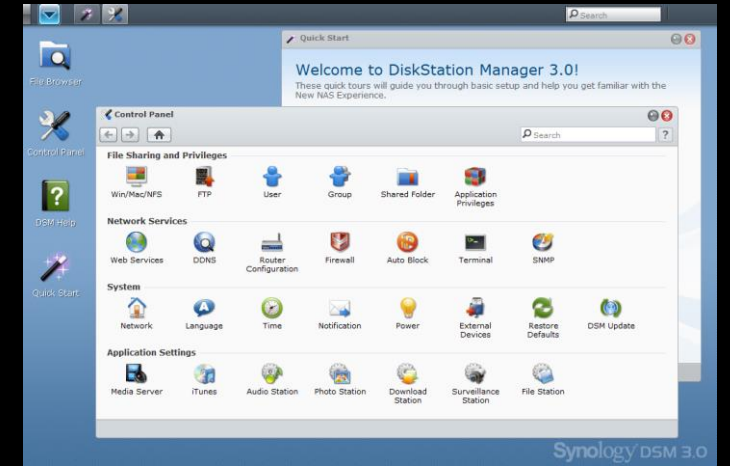
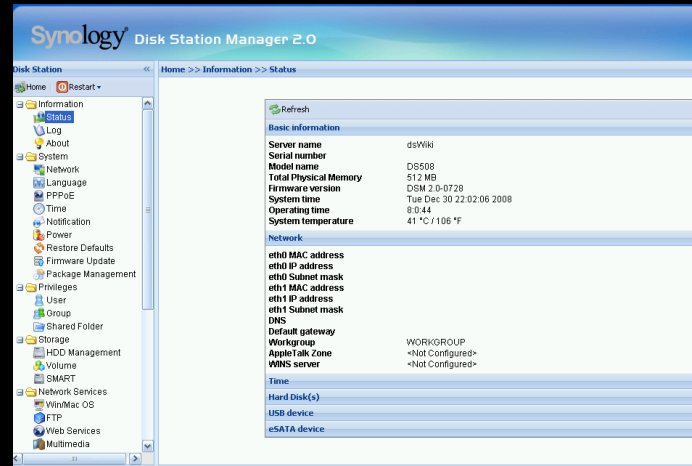
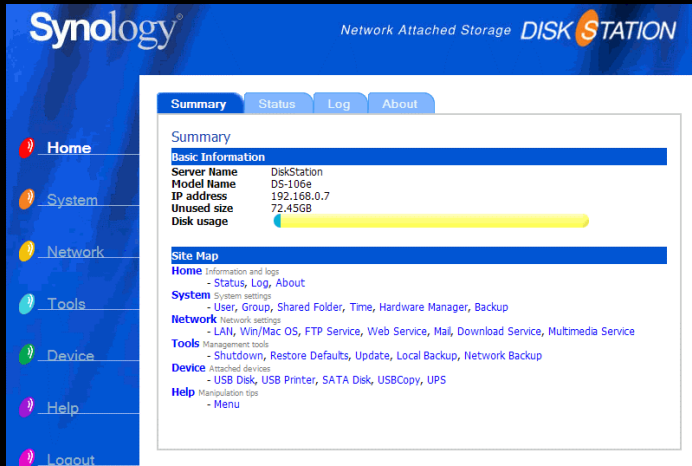


Surveillance
Station



File Station

Synology DSM 3.0





USB Copy

Photo Station

EzInternet QuickConnect

Audio Station DDNS

Note Station Video Station

Download Station

Wi-Fi Media Server DS video

DS file DS audio

Moments





Chat

Security Advisor

Universal Search

VPN

DS cam

Surveillance

UPS

Storage Analyzer

FTP

SHR

Shared Folder Sync

Presto

Office

Cloud Station

Web Server

Universal Search

C2 Backup



CMS

Active Backup

Peta Space

vDSM

Hyper Backup

Active Directory

BTRFS

MailPlus

iSCSI

High Availability

Office

Snapshot Replication

VMM

SSD Cache





Best Practice

Next generation file server

Backup business workloads

Virtualization storage

Surveillance deployment

Network security



Synology

SMART
STREAMLINED
SOLID

2019

Synology 2019



Brett Mustard
Lead Sales Manager



Business File Server

Best Practice

Business File Server



Access Type



Integration



Management



IT Support

Access Your Business File Server



Map Network Drive

Share files locally and collaboration with other people

Synchronization

Sync files to multiple devices with Synology Drive



Synology

SMART
STREAMLINED
SOLID

2019

Access Your Business File Server



Map Network Drive

- Data stores on central server
- File access lock available
- No offline editing
- Local network only

Synology Drive

- Multiple device sync
- Across Internet
- Offline editing
- Real time versioning

File Server Access



Team Folder



Home Folder



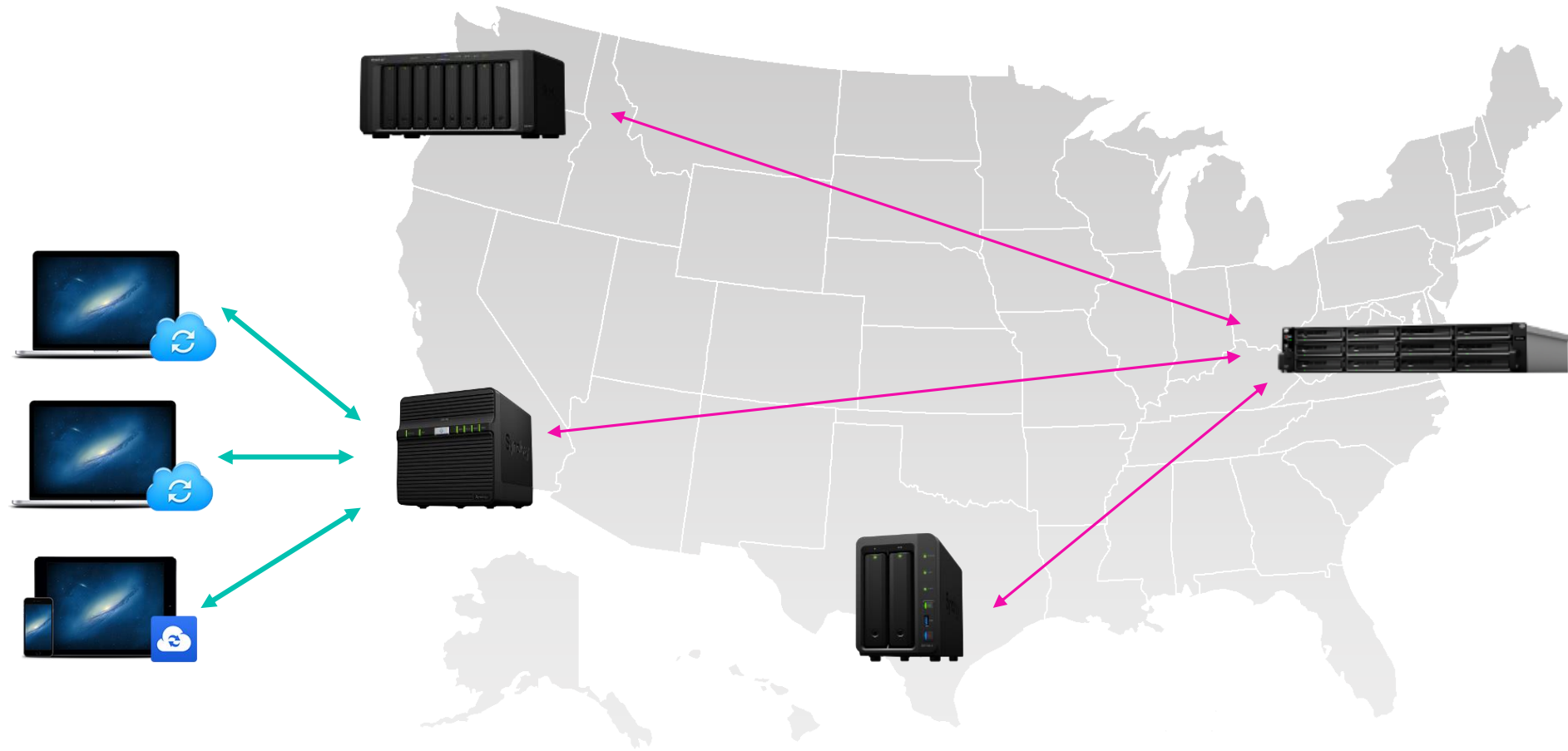
One Portal for All Files



Document

Slides

Spreadsheet



Cloud Station
ShareSync



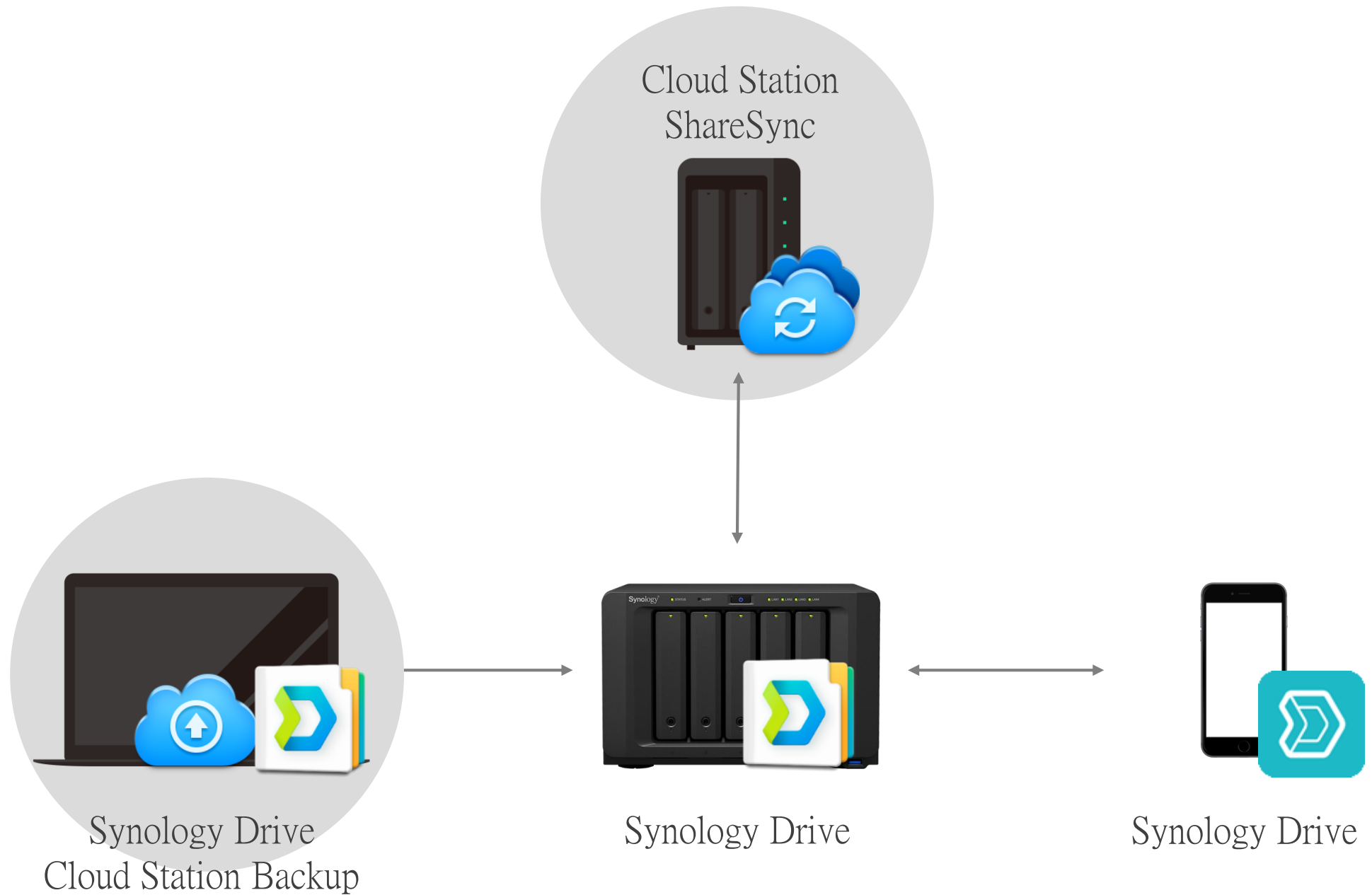
Cloud Station Drive
Cloud Station Backup



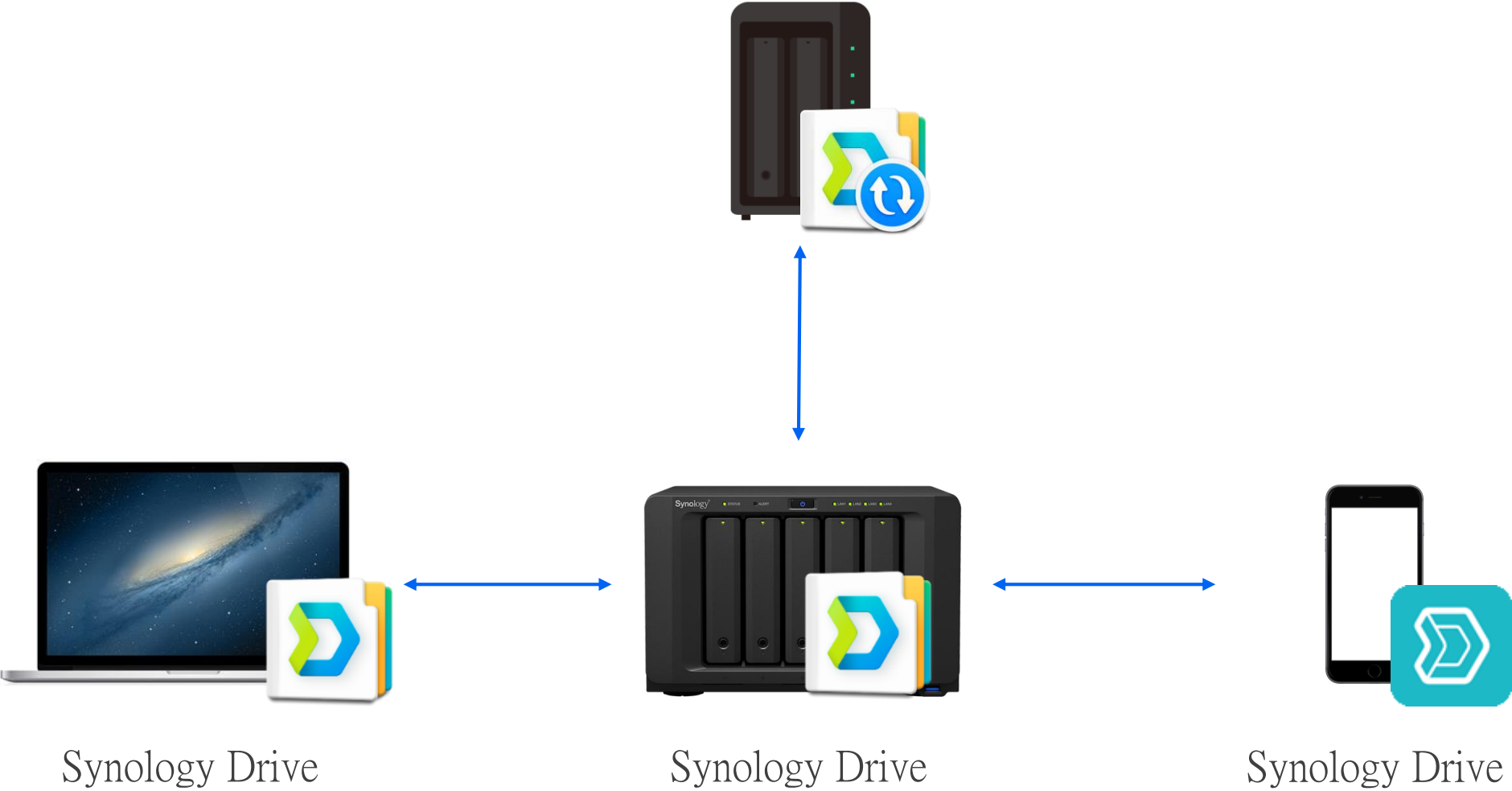
Cloud Station
Server



DS cloud



Drive ServerSync





Cloud Station

Maintain support through 2020
End of life in 2021



Directory Server

For Windows Domain

Active Directory Server



Microsoft Active Directory

Synology Active Directory Server

Automatically Map Network Drive

Mass software deployment

Manage Group Policy by RSAT



Synology

SMART
STREAMLINED
SOLID

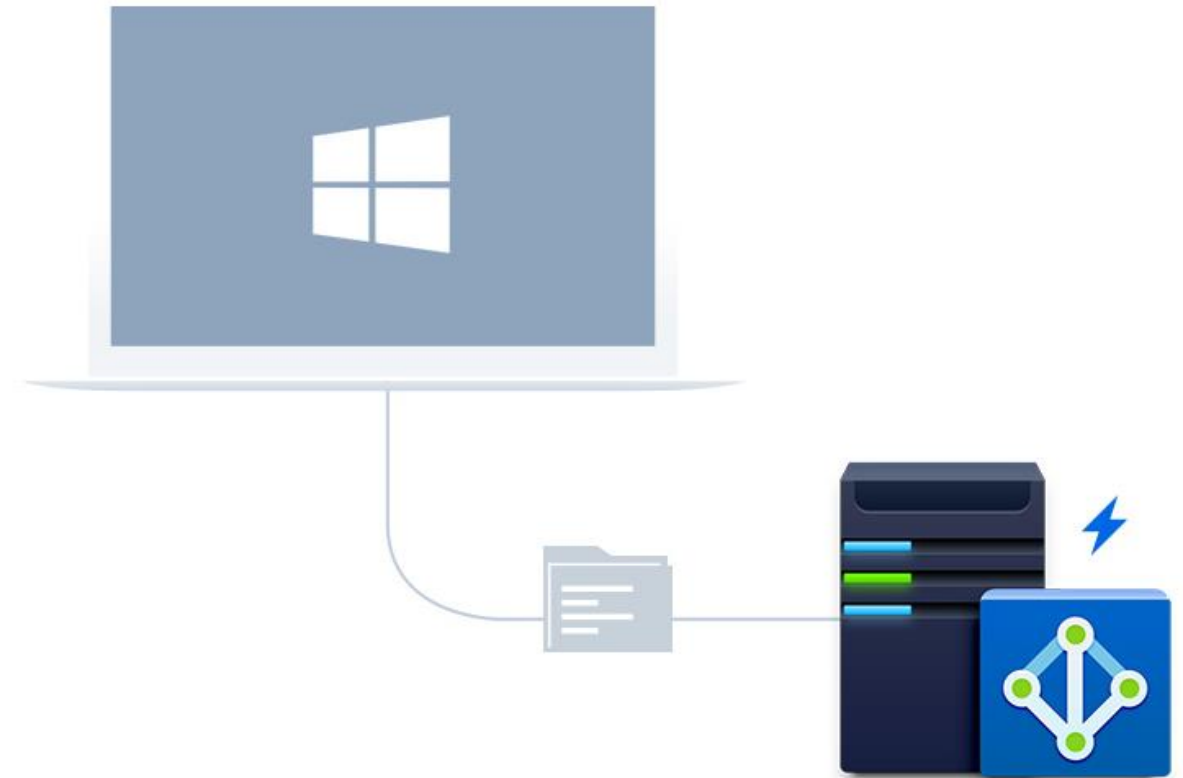
2019

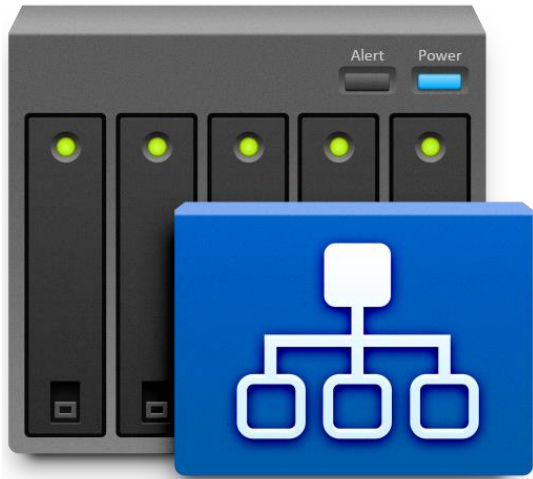
Directory Server 2019

Seamless migration from Windows AD

Failover and load balance

Read-only domain controller





CMS

Centralized Server Management

Central Management System



Manage servers from one host

Centralized monitoring

Centralized configuration

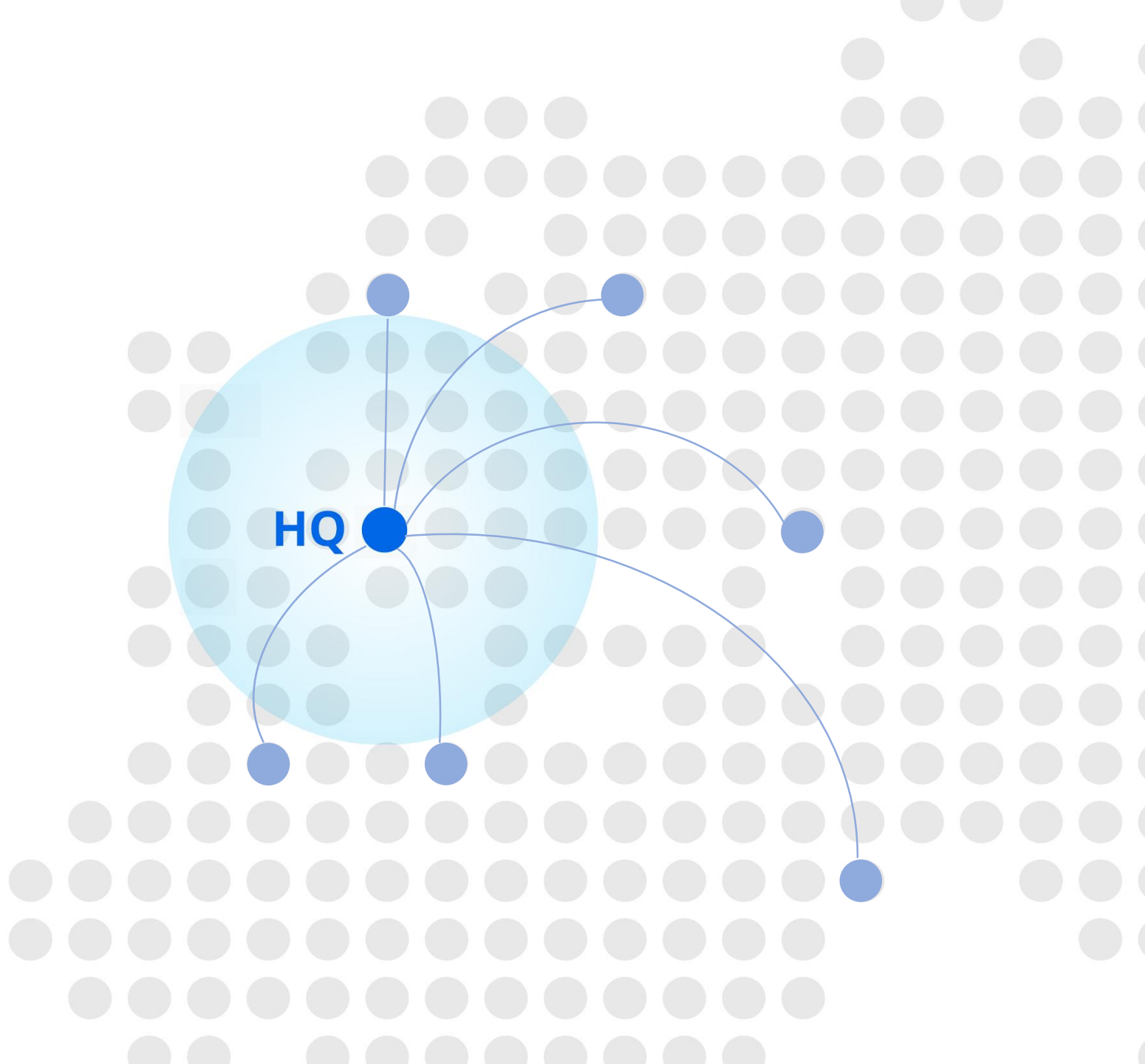
Centralized notification & update

KRYS Group

The leading optical industry in France



Adopts CMS to deploy and manage
1,350 NAS



10,000

Server Management

CMS 2019

Redesigned home page

Streamlined group policies

Flexible task management

The screenshot displays the CMS 2019 interface. On the left is a sidebar with navigation links: Overview, Servers, Groups, Policies, Tasks, Logs, CLIENT MANAGEMENT (with a sub-menu arrow), DSM Update, Packages, Storage, and Services. The main dashboard area contains several widgets:

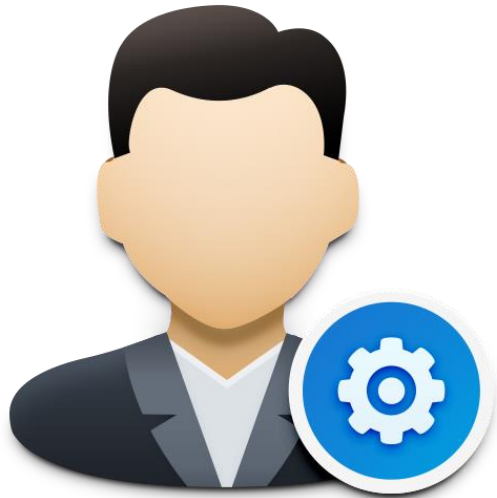
- Servers**: A blue card showing "10000 Servers". Below it is a table:

Availability	Servers
On	10000
Processing	0
Abnormal	0
- DSM Update**: A green card with a checkmark icon, labeled "Up-to-date", with the text "All servers are up-to-date".
- Volumes**: An orange card with a warning icon, labeled "Warning". Below it is a table:

Status	Servers
>90%	32
80~90%	134
<80%	9539
- Disks**: A green card with a checkmark icon, labeled "Healthy". Below it is a table:

Status	Servers
Normal	9903
Crashed	0
Deactivated	97
- Packages**: A table at the bottom showing package status across servers:

Package Name	Running	Abnormal	Stopped	Not installed
Surveillance Station	109	2	7	9878
Hyper Backup	885	22	0	9089
Snapshot Replication	2028	12	2	7680
Virtual Machine Manage	1392	20	2	8558



IT Self-Service

Reduce IT effort with IT self-service

IT Self-Service



Password Recovery

Allow users to reset password



File Recovery

Recycle bin and snapshot



File Sharing

Share large files to 3rd party
without creating user accounts



File Request

Easy upload portal for 3rd
party users



Synology

SMART
STREAMLINED
SOLID

2019

Next Generation File Server



Drive



ADS Integration



CMS



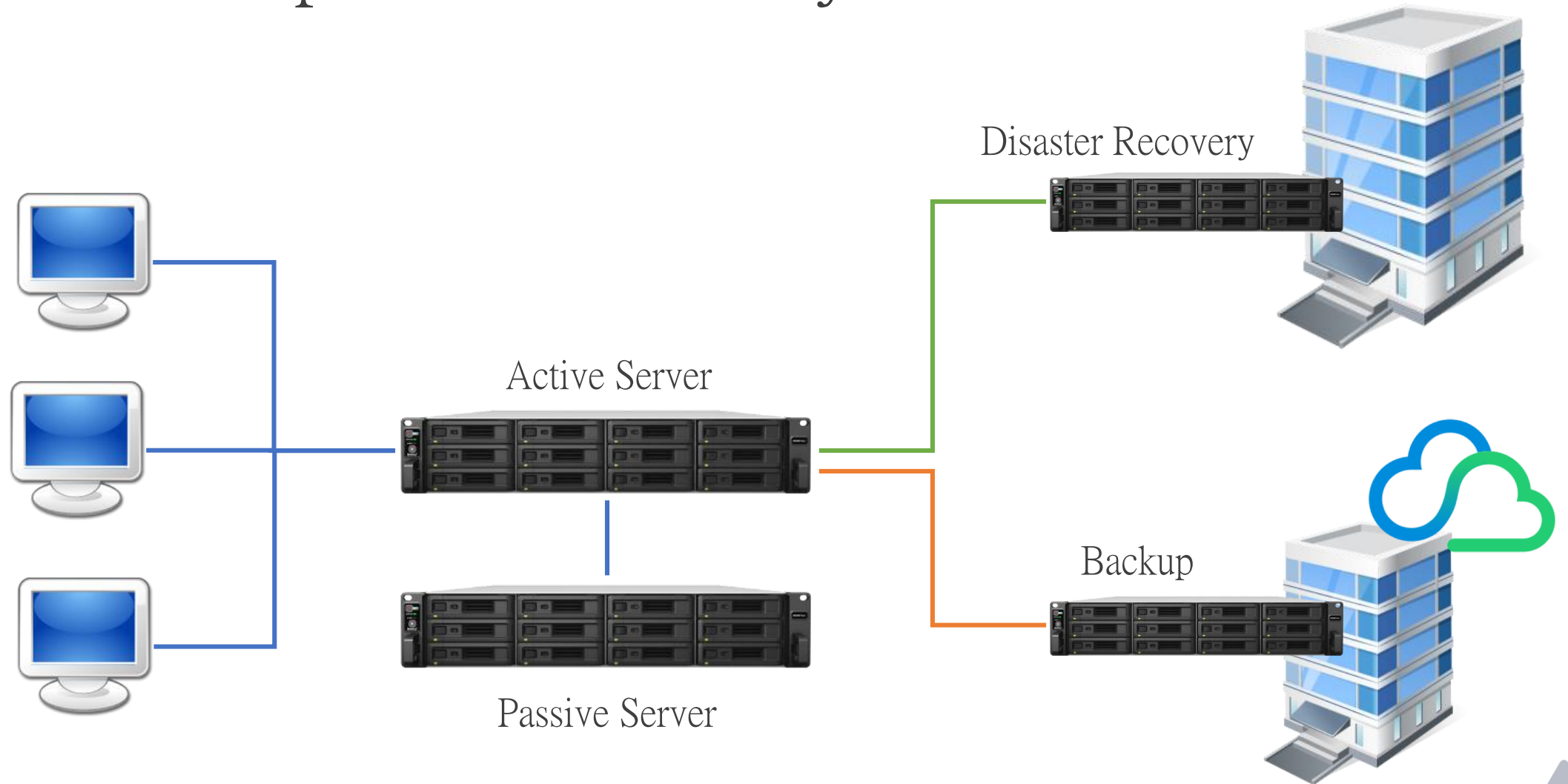
IT Self-Service

Always Backup Your Data

NAS Backup & Redundancy

Best Practice

NAS Backup and Redundancy



Backup and Redundancy



High Availability

Local redundancy



Snapshot Replication

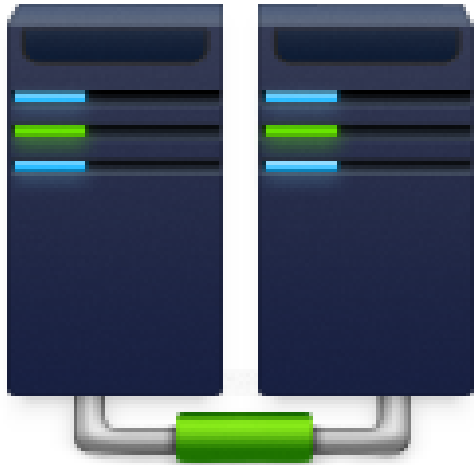
Remote redundancy
Disaster recovery



Hyper Backup

Multi-version backup

Synology High Availability



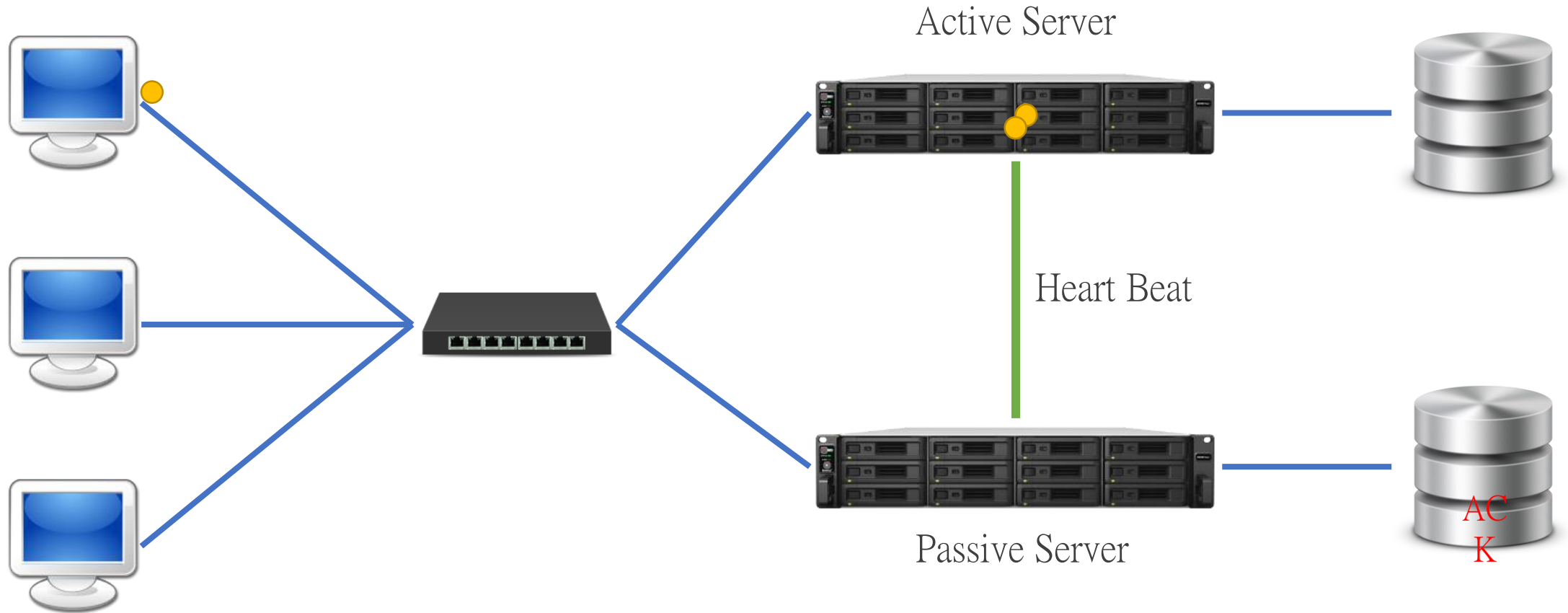
Active-Passive server

Real time sync for auto failover

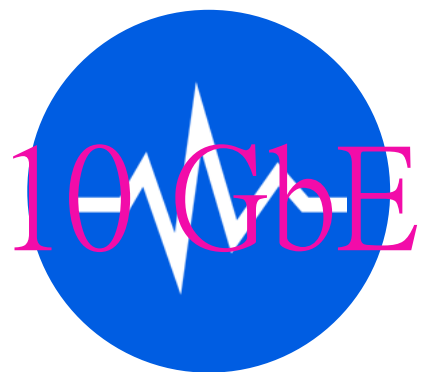
Highly available application server

Virtualization ready

Synology High Availability



SHA Performance Tuning

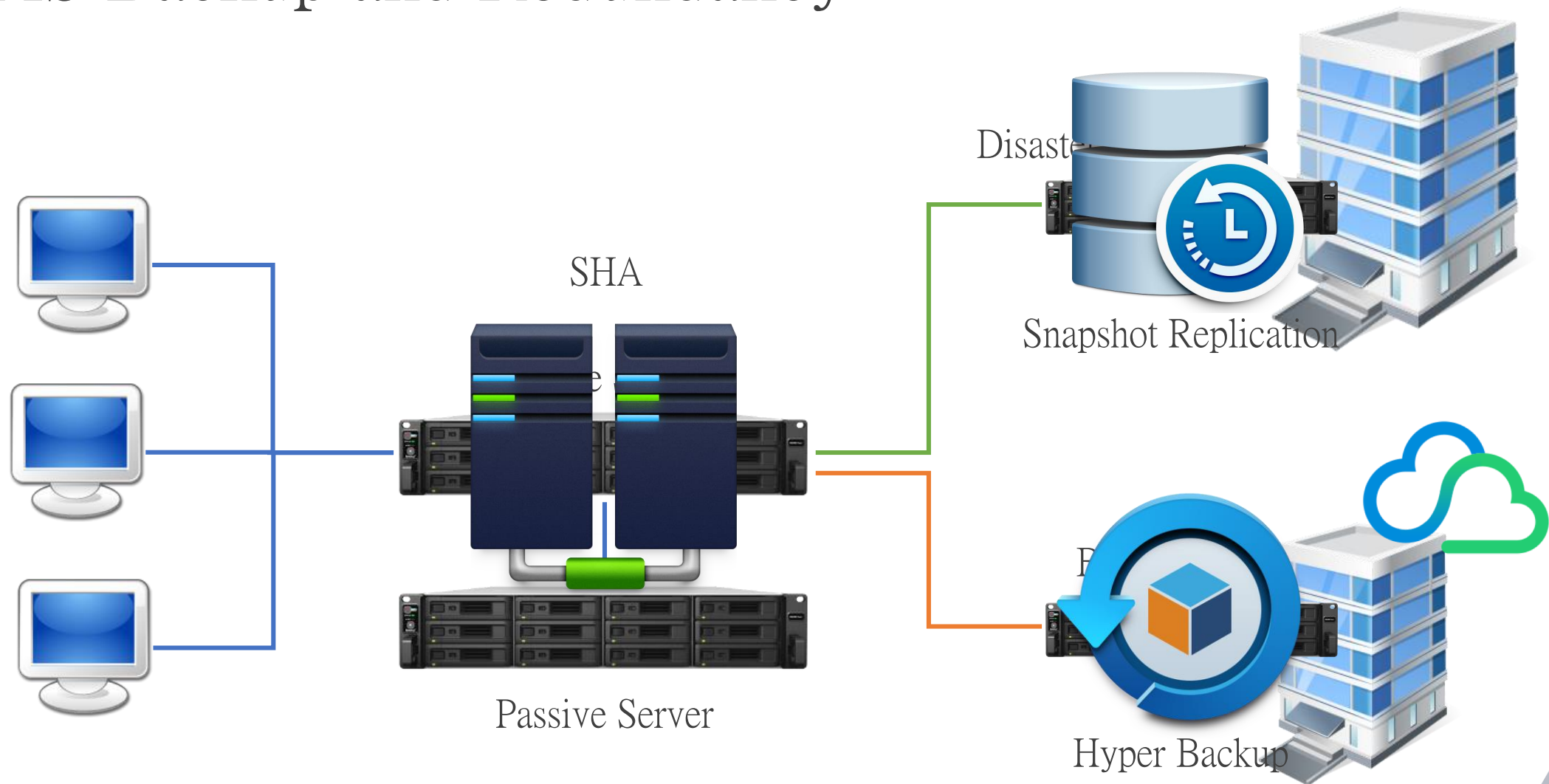


Heartbeat



Storage

NAS Backup and Redundancy



Remote Backup and Redundancy



Snapshot Replication



Hyper Backup

Snapshot Replication



Sync snapshot to remote location

Sync up to every 5 mins

Remote server has exact data for instant recovery

Recovery by change DNS setting

Hyper Backup

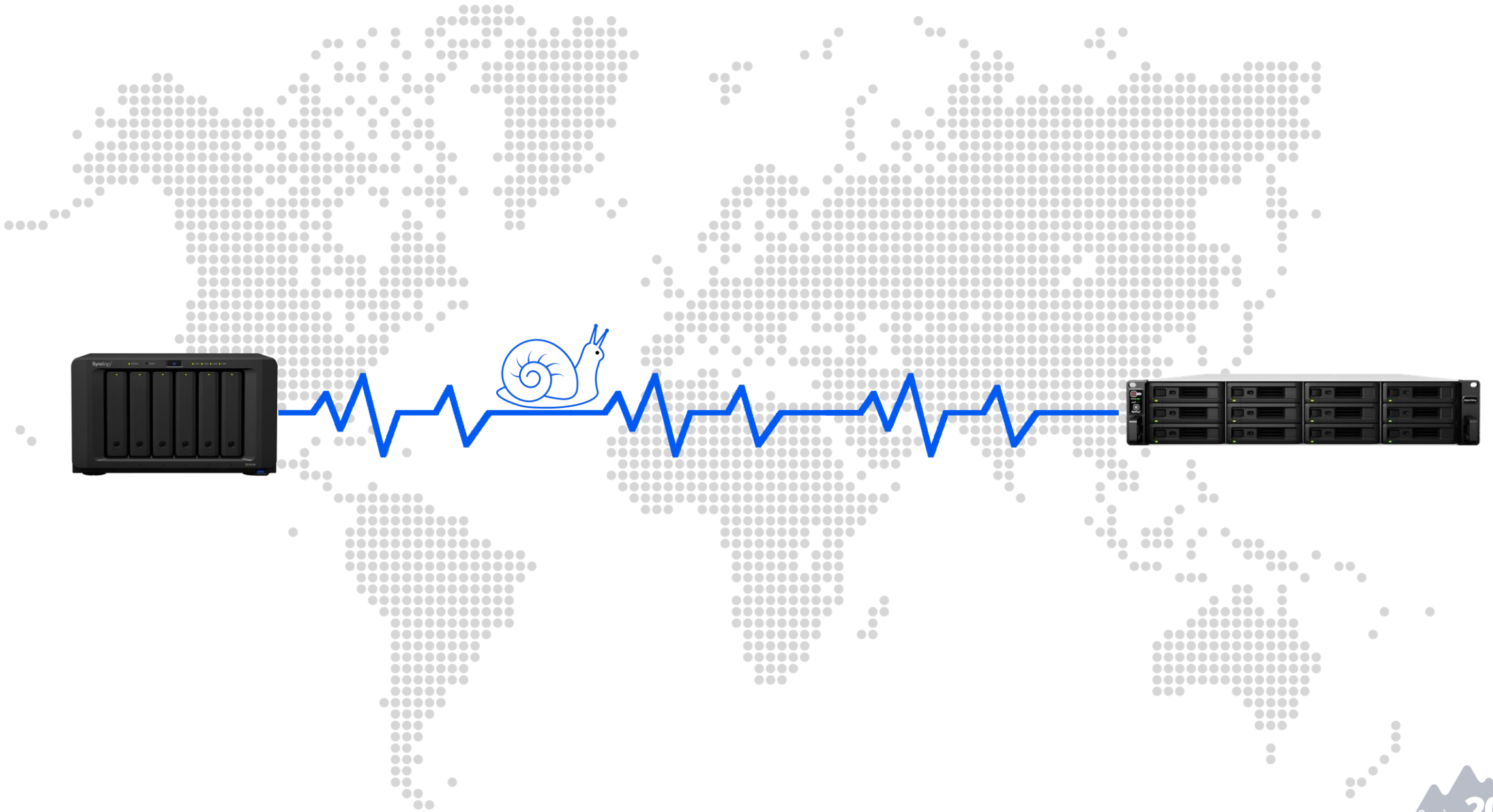


Backup to USB, NAS, rsync, or cloud

Cross version deduplication

Data encryption and compression

Backup packages and configuration



$$2\text{TB} \div 640\text{KB} = 932 \text{ hours} = 38 \text{ days}$$

2TB



50Mb/5Mb
Upload 640KB

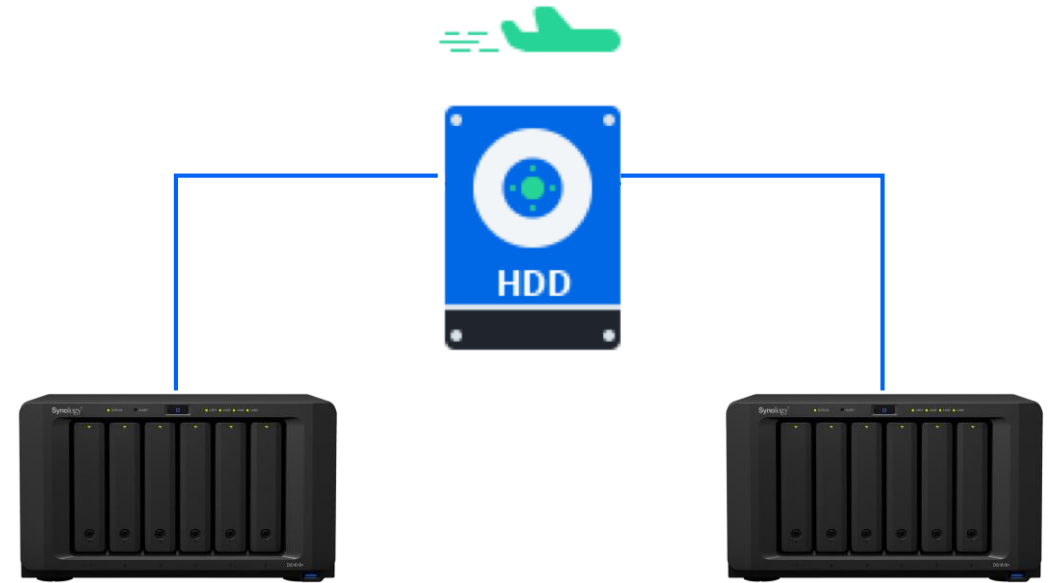
Export/Import Initial Copy

Local Network

Perform initial backup/replication in local network

External Disks

Export initial copy to external disk and import to remote server





Synology

SMART
STREAMLINED
SOLID

2019

Backup and Redundancy



High Availability

Local redundancy



Snapshot Replication

Remote redundancy
Disaster recovery



Hyper Backup

Multi-version backup

New Products

Scalable Storage with outstanding performance

DS1819+



2.1GHz

Quad-core
Intel CPUs

216TB

Expandable
Storage

M.2 SSD

Capable for
SSD Cache

18 Bays

Expand to 18 bays
with two DX517

Powerful 1U NAS for growing businesses

RS1619xs+



2.2 GHz

Quad-core
Xeon CPUs

64 GB

DDR4 Memory

M.2 SSD

On board SSD
Cache

16 Bays

Expand to 16 bays
with RX1217 (RP)



Synology

SMART
STREAMLINED
SOLID

2019